

FIFTEEN BEDFORD STREET
Covent Garden

1,883-5,301 SQ FT
REFURBISHED MEDIA-STYLE OFFICE SPACE

Contemporary office floors, accessed via an impressive entrance featuring a glass lightwell which floods the reception with natural light.

The available floors have been fully refurbished to provide modern, air-conditioned space with raised floors and new finishes throughout.



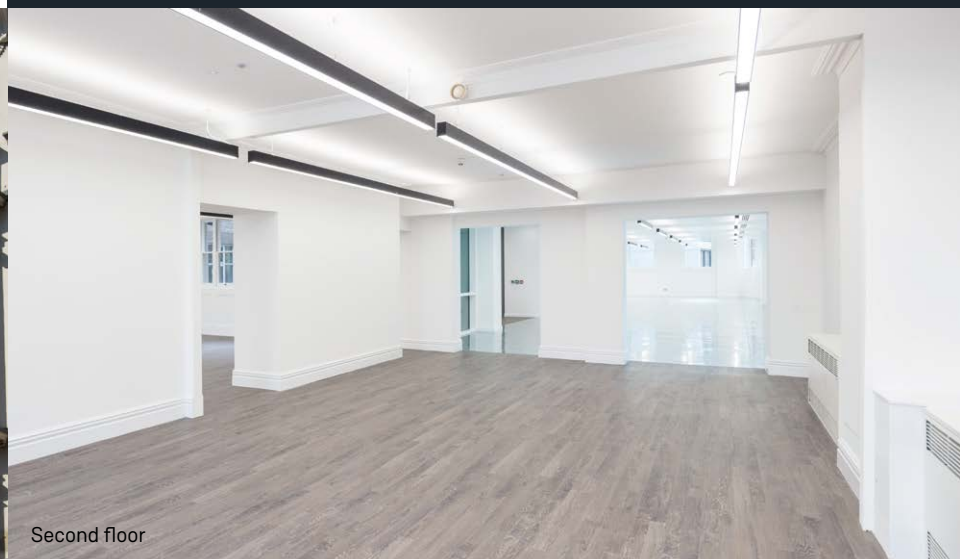
Description

The second floor has undergone a comprehensive redesign and the new contemporary finishes will appeal to a range of occupier sectors. In addition, it benefits from both a generous floor to ceiling height and excellent natural light. The floorplate provides a combination of a large open plan area with some cellular accommodation to the front.

The lower ground floor has been recently refurbished and benefits from new LED lighting and a metal tile ceiling. It is an efficient unit, arranged in an open plan format.

Amenities

- Air conditioning
- Raised floors
- 2 x 10 person passenger lifts
- Contemporary ground floor reception with glass lightwell
- Commissionaire
- Showers
- Wood effect floors
- EPC Rating: C



Second floor



Lower Ground floor

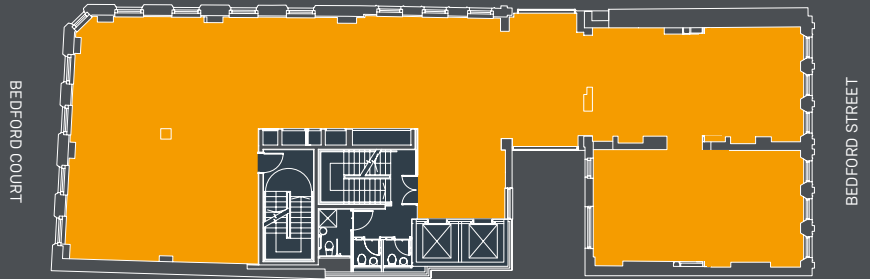


Second floor

Accommodation

SECOND FLOOR

Floor	Sq Ft	Sq M
Second	3,418	317.54
Lower Ground	1,883	174.94
Total	5,301	492.48



LOWER GROUND FLOOR



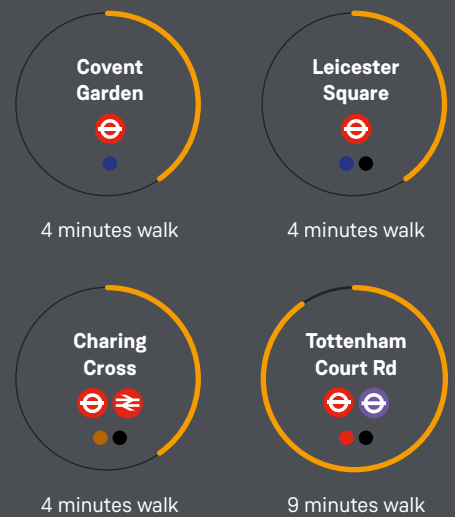
For indicative purposes only. Not to scale.



15 Bedford Street is located in the heart of Covent Garden, benefiting from a wide range of restaurants, shopping, entertainment venues and hotels.



Connections



Approximate walk times from the building. Source: TfL.

Viewings

Strictly through joint sole letting agents:

MELLERSH & HARDING

Julian Leech
020 7522 8525
jleech@mellersh.co.uk

JLL

Chris Valentine
020 7087 5362
chris.valentine@eu.jll.com

Terms

Upon application.

George Reynolds
020 7522 8524
greynolds@mellersh.co.uk

Henry Pauncefort-duncombe
020 7399 5363
henry.pauncefort-duncombe@eu.jll.com

15bedfordst.com

Misrepresentation Act 1967 and Property Misdescription Act 1991 1. Particulars: these particulars are not an offer on contract, nor part of one. You should not rely on statements made by JLL and Mellersh & Harding in these particulars or by word of mouth or in writing ("information") as being factually accurate about the property, its condition or its value. JLL and Mellersh & Harding don't have any authority to make any representations about the property, and accordingly any information given is entirely without responsibility on the part of the agents, seller(s) or lessor(s). 2. Photos etc: the photographs and computer generated images show only certain parts of the property as they appeared at the time they were taken/created. Areas, measurements and distances given are approximate only. 3. Regulations etc: any reference to alterations to, or use of, any part of the property does not mean that any necessary planning, building regulations or other consent has been obtained. A buyer or lessee must find about by inspection or in other ways that these matters have been properly dealt with and that all information is correct. 4. VAT: the VAT position of the building may change without notice. The code of leasing premises in England & Wales recommends you seek professional advice before agreeing a business tenancy. October 2017.